

TECHNICAL DATA

REGUPOL SONUS CURVE 17

formerly REGUPOL 6010 BA

Product

High load bearing screed isolation solution, manufactured from recycled crumb, delivering effective isolation and impact sound insulation, even under heavy loads.

REGUPOL sonus curve 17 is often the preferred choice for premium developments and those where superior acoustic performance is critical.

REGUPOL sonus curve 17 meets the requirements of Approved Document E (England & Wales), Technical Booklet G (Northern Ireland) and Section 5 of the Building Regulations (Scotland).

Certification

- **Cradle to Cradle Certified®** is a registered trademark of the Cradle to Cradle Products Innovation Institute.
- Manufacturer EPD available upon request.
- Green Circle Certified.

Material

- PUR-bonded recycled rubber fibres
- Dimpled profile on the underside

Features and Benefits

- Excellent impact and airborne performance
- Minimal creep, even under high loads
- Resistant to ageing and deformation
- Quick and easy to install
- Mildew and moisture proof
- Manufactured using recycled materials – the proportion of pre and post-consumer content is listed in the products Green Circle Certificate which is available upon request.
- Manufacturing facility certified to ISO 9001, ISO 45001, ISO 14001, ISO 50001

Applications

REGUPOL sonus curve 17 delivers a high end isolation solution for prestigious developments and areas where heavy loads are apparent. These include:

- Luxury apartments and Penthouses
- Hotels
- Cinemas/Theatres
- Schools and Libraries
- Hospitals
- Retail
- Gymnasiums



Physical information

Roll width	1250mm	
Roll length	10m	
Material thickness	17mm	
Weight per roll / per m ²	†94.2kg	†7.2kg/m ²
Material composition	Recycled Rubber	

†Approximate Values

Acoustical Performance*	Standard	Result	Comment
REGUPOL sonus curve 17 140mm solid concrete floor	BS EN ISO 10140-3:2021	ΔL_w 45dB	SRL Cert. No. 16559
REGUPOL sonus curve 17, Heavyweight Standard Floor	BS EN ISO 140-7:1998	$L'_{nT,w}$ 40 dB $D_{nT,w}$ 62 dB	Post completion testing**
Under screed:			
45 mm anhydrite screed, REGUPOL sonus curve 17, 140 mm concrete slab	DIN EN ISO 10140-3 DIN EN ISO 717-2	$\Delta L_w \geq 28$ dB $L_{n,w}$ 45 dB	Test reports 024-H163-42591
	DIN EN ISO 10140-1 DIN EN ISO 717-1	R_w 63 dB	024-H162-42591
46mm concrete REGUPOL sonus curve 17 140mm solid concrete floor	BS EN ISO 10140-3:2021	ΔL_w 36dB	SRL Cert. No. 15982
Under T&G timber:			
18mm T&G chipboard REGUPOL sonus curve 17, Heavyweight Standard Floor	BS EN ISO 140-8:1998	$\Delta L_w \geq 22$ dB	Test report 3853

*Assembly from top to bottom

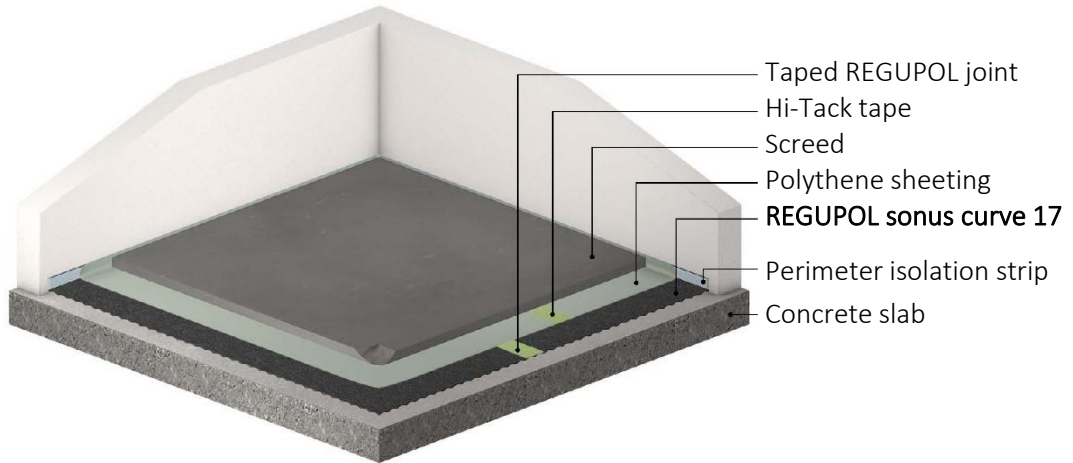
** Independent test reports available upon request.

Material properties	Standard	Result
Density		approx. 575 kg/m ³
Maximum surface load		50 kN/m ²
Mean dynamic stiffness value	DIN EN 29052-1	$s'_t \leq 15$ MN/m ³
Compressibility	DIN EN 12431	$c \leq 2$ mm

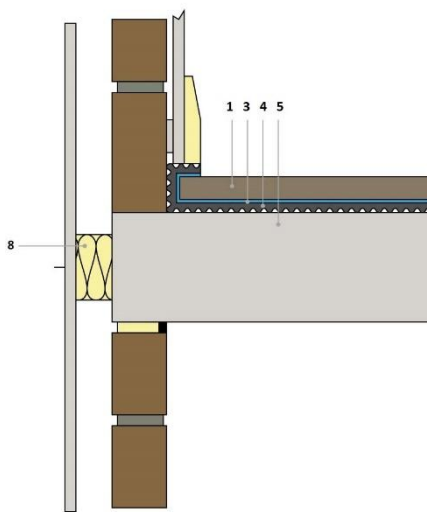
Thermal behaviour	Standard	Result
Thermal conductivity	DIN EN 12667	$\lambda = 0.075$ W/(mK)
Thermal resistance	DIN EN 12667	$R = 0.167$ (m ² K)/W
Temperature resistance		-20 to +60° C

Health protection	Standard	Result
VOC	DIN EN 16516	compliant with EU-LCI list and German AgBB scheme; "A+" as per décret n°2011-321

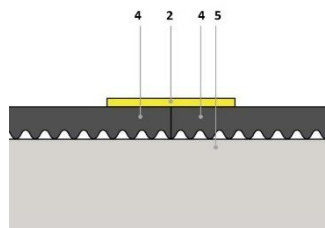
Floor assembly example
Cement screed



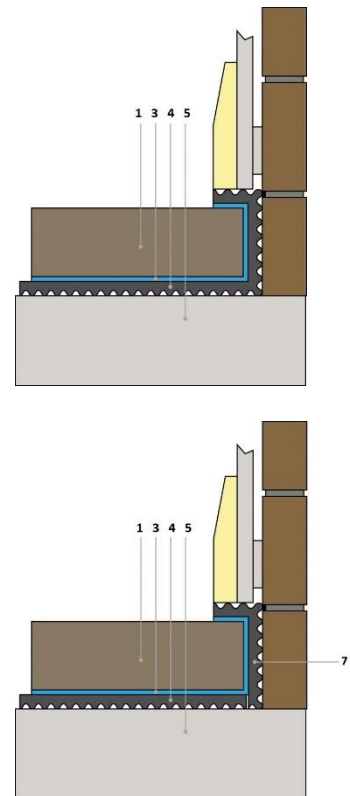
Construction Detail



Joint Details



Perimeter Details

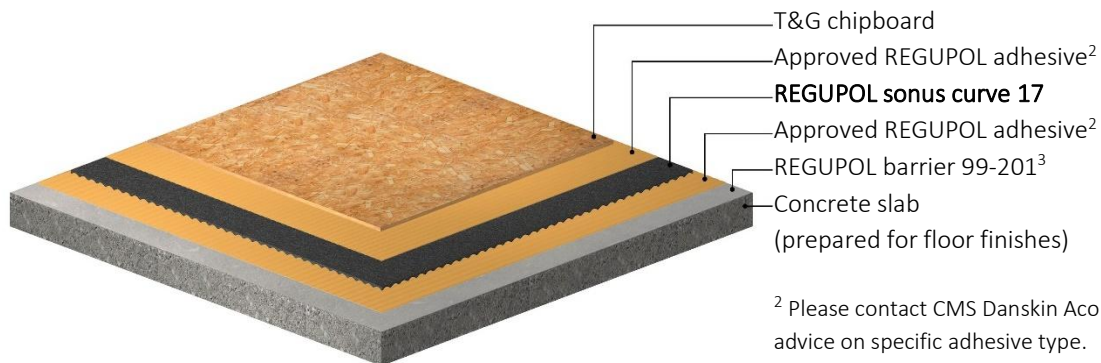


- 1 Screed
- 2 Hi-Tack tape
- 3 Polythene sheeting
- 4 REGUPOL sonus curve

- 5 Concrete slab
- 6 Suspended ceiling system
- 7 Perimeter isolation strip
- 8 Acoustic cavity closer

Floor assembly

T&G boards



² Please contact CMS Danskin Acoustics for advice on specific adhesive type.

³ If moisture exceeds required levels

NBS

- Regupol products are listed by CMS Danskin Acoustics on NBS Source.

General Storage and Handling

- keep the product dry and undercover.
- suitable handling equipment will be required for bulky products or pallets.
- DO NOT stack products or pallets as these will become unstable.

Installation

- Separate Installation guidelines by final floor finish are available to request.

Operation

- The product is intended to be static post installation. There is no operator involvement in its use.

Maintenance

- The products intended use and design, along with its often-inaccessible location post construction, means there are no maintenance requirements.

Health & Safety

- follow appropriate site material handling methods.
- when used with adhesives read and implement all Safety Data Sheet recommendations.
- as an article there is no requirement for a Safety Data Sheet.

Packaging & Product Disposal

- pallets can be readily re-used.
- pallet wrap / covers should be placed in an appropriate waste stream.
- the product remains in the construction until refurbishment or demolition as such the project lead should apply the contemporary national and local regulations for waste bearing in mind site and installation contaminants.

IMPORTANT: The information provided within this document is believed correct and to the best of our available knowledge at its revision date and is provided as suggestion for safe handling, storage, transportation, use and disposal. The information should not be considered obligation in respect of warranty of (technical) performance, quality (specification) or suitability for any application or design. The customer must satisfy themselves the product (or draft specification) are relevant and suitable for their need and design intent. Prospective users should test a sample of product under their own conditions to satisfy themselves of its suitability for intended purpose and that expert advice be sought where different applications are contemplated. Due to our policy of continuous improvement we reserve the right to alter or amend published specification or design without prior notice. Reproduction of any part of this publication in any manner is not permitted without our prior written consent.