

TECHNICAL DATA

REGUPOL SONUS CURVE 8 [E-FC-6]

formerly REGUPOL E48

FOR BEAM & BLOCK FLOORS

Product

Recycled tyre crumb product designed to isolate screeds from the main structure of the building, reducing impact energy generated by general footfall.

REGUPOL sonus curve 8 offers enhanced acoustic performance at loads up to and including 30 kN/m² and having a dimpled surface on one side increases air movement, further aiding overall performance.

Approved for use under the Robust Detail scheme to Part E compliance, **Robust Detail Ref. No. E-FC-6**



Certification

- **Cradle to Cradle Certified®** is a registered trademark of the Cradle to Cradle Products Innovation Institute.
- Manufacturer EPD available upon request.
- Green Circle Certified.

Material

- PUR-bonded recycled rubber fibres
- Dimpled profile on the underside

Features and Benefits

- Excellent impact and airborne performance
- Offers long term performance without collapse or “bottoming” out under high point loads
- Resistant to ageing and deformation
- Quick and easy to install with no need for separate perimeter strips
- Minimises construction heights
- Mildew and moisture proof
- Manufactured using recycled materials – the proportion of pre and post-consumer content is listed in the products Green Circle Certificate which is available upon request.
- Manufacturing facility certified to ISO 9001, ISO 45001, ISO 14001, ISO 50001

Applications

REGUPOL sonus curve 8 has been developed to offer enhanced isolation and impact sound performance in:

- Apartments
- Hospitals
- Hotels
- Retail
- Schools

Physical information

Roll width	1150mm	
Roll length	13m	
Material thickness	8mm	
Weight per roll / per m ²	±57kg	±3.6kg/m ²
Material composition	Recycled Rubber	

Acoustical Performance

Standard

Comment

REGUPOL sonus curve 8

Approved for use under the Robust Detail scheme to Part E compliance, RD Ref. No. E-FC-6

Material properties

Standard

Result

Density		approx. 575 kg/m ³
Maximum surface load		30 kN/m ²
Mean dynamic stiffness value	DIN EN 29052-1	$s'_t \leq 30 \text{ MN/m}^3$
Compressibility	DIN EN 12431	$c \leq 1 \text{ mm}$

Thermal behaviour

Standard

Result

Thermal conductivity	DIN EN 12667	$\lambda = 0.075 \text{ W/(mK)}$
Thermal resistance	DIN EN 12667	$R = 0.08 \text{ (m}^2\text{K)/W}$
Temperature resistance		-20 to +60° C

Health protection

Standard

Result

VOC	DIN EN 16516	compliant with EU-LCI list and German AgBB scheme; "A+" as per décret n°2011-321
-----	--------------	---

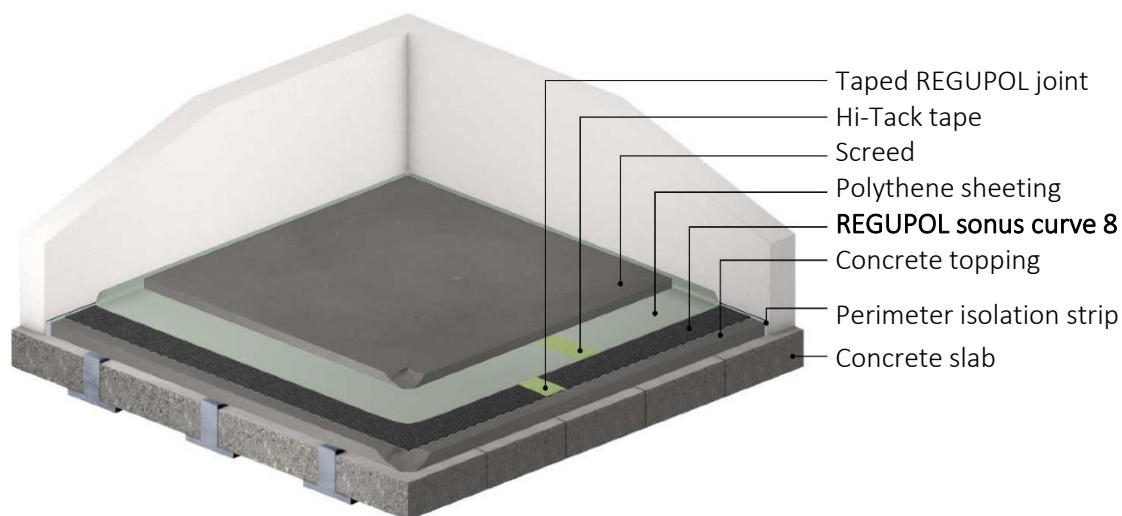
Installation

Full installation guidelines are available upon request.

Storage

REGUPOL sonus curve should be protected from moisture during storage, transport and installation.

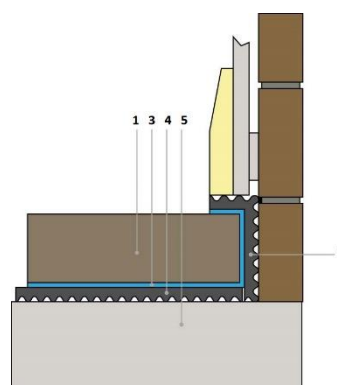
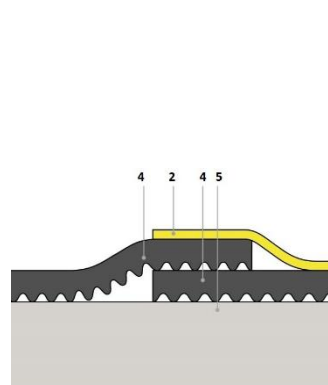
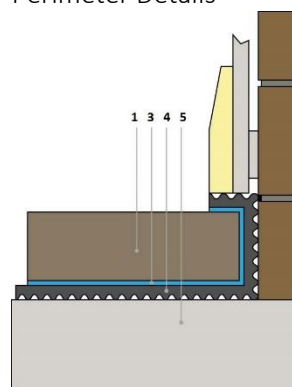
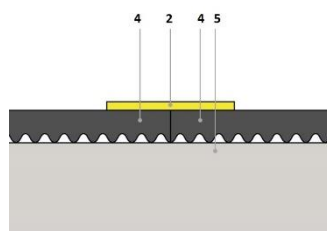
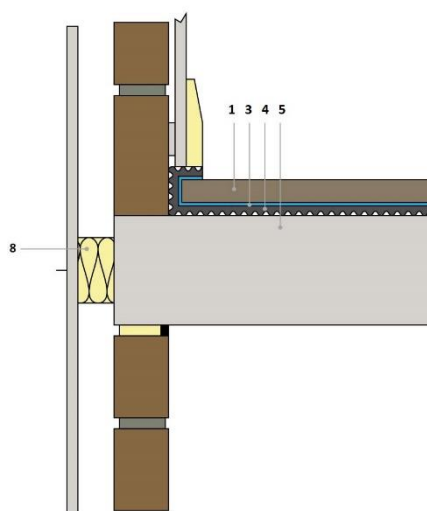
Floor assembly example Cement screed



Construction Detail

Joint Details

Perimeter Details



- 1 Screed
- 2 Hi-Tack tape
- 3 Polythene sheeting
- 4 **REGUPOL sonus curve**

- 5 Concrete slab
- 6 Suspended ceiling system
- 7 Perimeter isolation strip
- 8 Acoustic cavity closer

IMPORTANT: The information provided within this document is believed correct and to the best of our available knowledge at its revision date and is provided as suggestion for safe handling, storage, transportation, use and disposal. The information should not be considered obligation in respect of warranty of (technical) performance, quality (specification) or suitability for any application or design. The customer must satisfy themselves the product (or draft specification) are relevant and suitable for their need and design intent. Prospective users should test a sample of product under their own conditions to satisfy themselves of its suitability for intended purpose and that expert advice be sought where different applications are contemplated. Due to our policy of continuous improvement we reserve the right to alter or amend published specification or design without prior notice. Reproduction of any part of this publication in any manner is not permitted without our prior written consent.