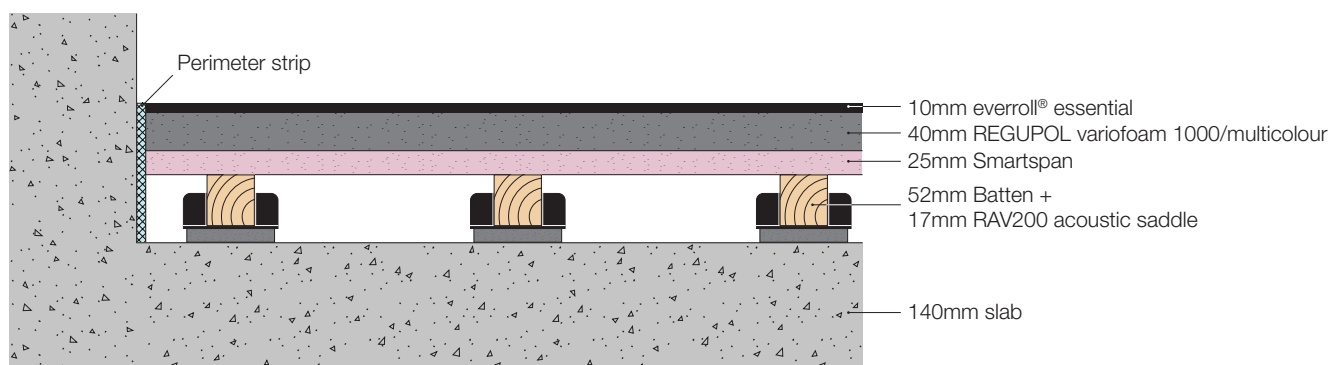


CAB-RL144 Gym Floor System

Technical Data Sheet

CMS Danskin Acoustics CAB-RL144 Gym Floor System consists of various resilient layers including a floor finish laid over a floating floor system.

Rating generally according to BS EN ISO 717-2 standardised A-weighted maximum impact sound pressure levels, $L_{IA,Fmax,V,T}$	63dB
---	-------------



FEATURES and BENEFITS

- Provides a seamless finish
- Easy to level floating floor system
- Various colour finishes available (see colour chart)

PHYSICAL PROPERTIES

- A top finish floor layer of Everroll which is a 10mm thick, PUR bonded blend of SBR rubber crumb and EPDM granulate available in plain Black and Black with a percentage of Grey EPDM granulate. Other colour options are available.
- A second layer of REGUPOL Variofoam 1000 which is a 40mm thick recycled foam product providing a firm but resilient underlay to the system.
- The above layers laid on 25mm thick Smartspan boards 37.5kg/m² which is laid over the 17mm RAV200 acoustic cradle system with a 52mm batten.

10mm everroll® essential	ROLL 10m x 1.25m x 10mm
40mm REGUPOL Variofoam 1000	SHEET 2m x 1m x 40mm
Smartspan board	1.2m x 0.6m x 25mm (other thicknesses are available)
17mm RAV200 Saddle	Positioned at 300mm centres
Perimeter Flanking Strip	ROLL 10m x 10mm in varying widths

For further individual product information, technical data sheets are available on request for each component layer. Please also see installation guidance.

TESTING

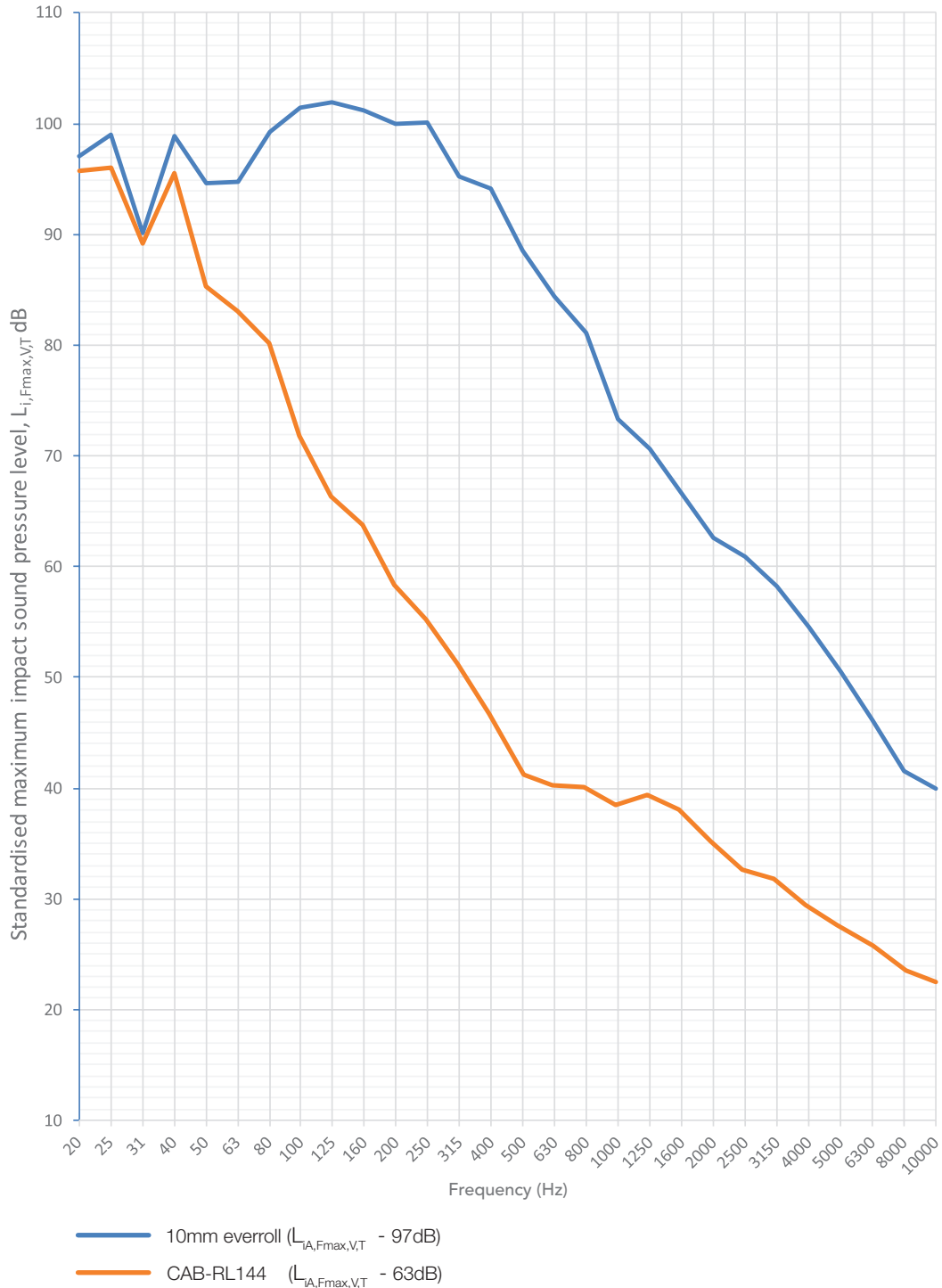
Tests have been carried out at a Laboratory to determine the maximum impact sound pressure levels of various resilient layers and floating floor systems on top of a 140mm thick solid concrete floor following the principles of BS EN ISO 10140-3:2021 Annex A.

The results are given in 1/3rd octave bands over the frequency range 20Hz to 10kHz. For the tests a 36kg kettlebell was dropped from a height of 500mm using a hoist.

Some resilient gym floor systems require the use of spreader plates beneath the feet or legs of heavy kit and equipment for stability. This should be assessed by the kit and equipment suppliers, floor samples are available if required.

The acoustic performance shown is not necessarily transferable to other structural concrete floors. The positioning of columns, thickness of structural floors, size of structural floor spans, ceiling types and

other elements can all influence performance. This data should be considered by your project acoustic consultant.



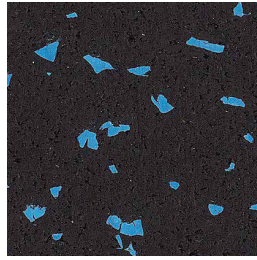
ROLLS & FLOOR BUILD-UPS

Colours & Decors

REGUPOL everroll essential range* (other colours available upon request)



Berlin (3195)



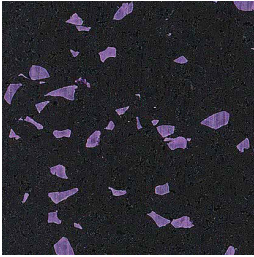
Palau (3146)



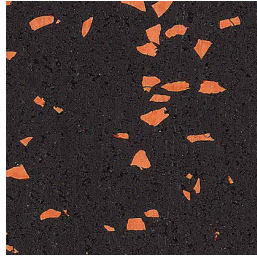
Helsinki (3196)



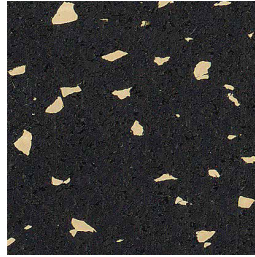
Glasgow



Bilbao (3159)



Amsterdam (3185)



Kush (3150)

Deviations from the colours shown are possible due to variation in batches and print reproduction.

* Wherever direct, prolonged or repeated skin contact can be expected, the requirements for a Consumer Product currently valid within the EU must be met. Where this is not expected, your choice can be made from the entire decor portfolio. Those products the manufacturer has identified as fulfilling the requirements of a Consumer Product, are explicitly marked as such. To aid your choice the manufacturers recommended everroll wear layer has been tabulated.

Application	everroll wear layer
<ul style="list-style-type: none"> • CrossFit • Functional Training 	Ultimate
<ul style="list-style-type: none"> • Cardio • Free-weights • Lifting Platforms • Machine Training • Spin Studios 	Essential, Classic or Ultimate
<ul style="list-style-type: none"> • Changing Rooms • Martial Arts Studios • Physiotherapy Rooms • Yoga Studios 	NOT RECOMMENDED