

## INSTALLATION GUIDELINES

### REGUPOL QUIETLAY [E-FC-15]

#### Product

**REGUPOL quietlay** is a cost-effective rubber bound resilient layer product manufactured from recycled materials.

Approved for use under the Robust Detail scheme to Part E compliance (**E-FC-15**), **REGUPOL quietlay** has been specifically developed for controlling impact and airborne sound in all types of residential projects, including Apartments, Student accommodation, Care homes.



#### Storage

**REGUPOL quietlay** should be protected from moisture during storage, transport and installation.

#### Preparation

---

Prepare the base floor. It is important that the base floor is clean (free from loose dirt and concrete dust), flat and where possible, dry.

#### Installing the REGUPOL quietlay with Polythene Sheeting

---

##### Only applicable where proprietary flowing screeds are used

1. The **REGUPOL quietlay** is supplied in sheets of 2.25m x 1.15m.
2. Lay the **REGUPOL quietlay** directly on to the concrete sub floor making allowance for the minimum 100mm upturn at all perimeter edges.
3. The **REGUPOL quietlay** must be cut using a sharp craft knife or similar tool and straight edge.
4. The **REGUPOL quietlay** must be fitted into all corners with cuts made at the appropriate angle to complement the corners, whether internal or external.
5. If using the 'overlapping' method, please follow the simple guideline 'Joint Details' on page 3: Overlap all longitudinal joints by at least 50mm and tape all joints using Hi-Tack Tape or similar approved.
6. If using the 'butted edge' detail, please follow the simple guideline 'Joint Details' on page 3: Butt all edges together and ensure that all butted joints are sufficiently taped to avoid any movement under foot traffic.
7. Turn the **REGUPOL quietlay** up at all perimeter edges to ensure the screed does not at any point come into direct contact with the separating/party walls. The upturn should be of sufficient length to lap under all wall linings and skirting's - recommended upturn should be a minimum 100mm.

Excess material to be trimmed down after the screed has set.

**N.B.:** It is important that all penetrations through the screed such as soil pipes, columns, etc. are also isolated from the screed in the same manner.

*Note: If installing a thermal insulation layer. This must sit on top of the **REGUPOL quietlay**.*

8. All exposed joints of the **REGUPOL quietlay** on the vertical upturns must also be taped with Hi-Tack Tape.
9. Lay a polythene sheeting or similar of minimum 500 gauge over the entire floor area ensuring that any overlapped joints are a minimum 100mm and taped using Hi-Tack Tape or similar approved. The polythene sheeting must also be taken up at all perimeter edges and again all overlapped joints taped. It is very important that the **REGUPOL quietlay** is covered in its entirety by the polythene sheeting.
10. It is essential that the area to be screeded is checked for any exposure of the subfloor, that all **REGUPOL**/Polythene sheeting remain undamaged and that all joints are taped. Double checking at this point is imperative.
11. The screed can now be cast in accordance with the respective guidelines which will be available from the screeding manufacturers. However, care must be taken not to cause any damage to the **REGUPOL**/Polythene sheeting, prior to or during the casting process.

### Installing the REGUPOL quietlay without Polythene Sheeting

---

1. The **REGUPOL quietlay** is supplied in sheets of 2.25m x 1.15m.
2. Lay the **REGUPOL quietlay** directly on to the concrete sub floor making allowance for the minimum 100mm upturn at all perimeter edges.
3. The **REGUPOL quietlay** must be cut using a sharp craft knife or similar tool and straight edge.
4. The **REGUPOL quietlay** must be fitted into all corners with cuts made at the appropriate angle to complement the corners, whether internal or external.
5. If using the 'overlapping' method, please follow the simple guideline 'Joint Details' on page 4: Overlap all longitudinal joints by at least 50mm and tape all joints using Hi-Tack Tape or similar approved.
6. If using the 'butted edge' detail, please follow the simple guideline 'Joint Details' on page 4: Butt all edges together and ensure that all butted joints are sufficiently taped to avoid any movement under foot traffic.
7. Turn the **REGUPOL quietlay** up at all perimeter edges to ensure the screed does not at any point come into direct contact with the separating/party walls. The upturn should be of sufficient length to lap under all wall linings and skirting's - recommended upturn should be min. 100mm.

Excess material to be trimmed down after the screed has set.

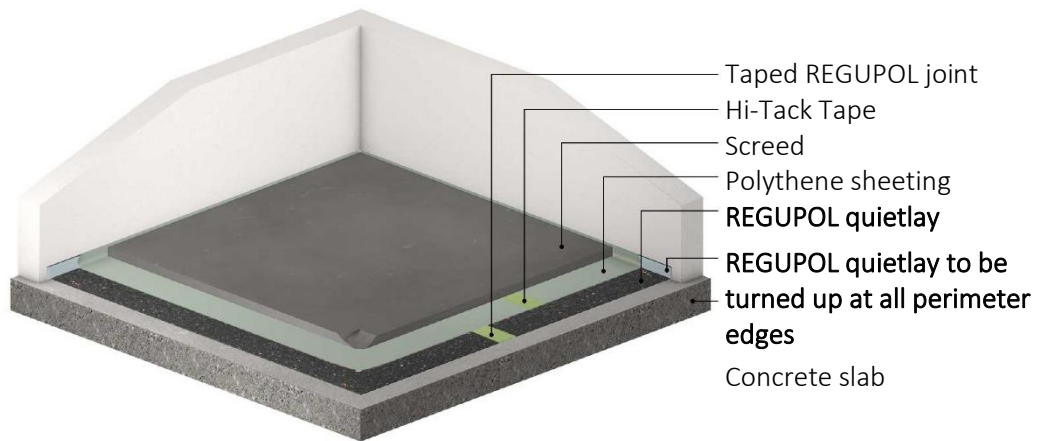
**N.B.:** It is important that all penetrations through the screed such as soil pipes, columns, etc. are also isolated from the screed in the same manner.

*Note: If installing a thermal insulation layer. This must sit on top of the **REGUPOL quietlay**.*

8. All exposed joints of the **REGUPOL quietlay** on the vertical upturns must also be taped with Hi-Tack Tape.
9. It is essential that the area to be screeded is checked for any exposure of the subfloor, that the **REGUPOL quietlay** remains undamaged and that all joints are taped. Double checking at this point is imperative.
10. The screed can now be cast in accordance with the respective guidelines which will be available from the screeding manufacturers. However, care must be taken not to cause any damage to the **REGUPOL quietlay**, prior to or during the casting process.

## Floor assembly example

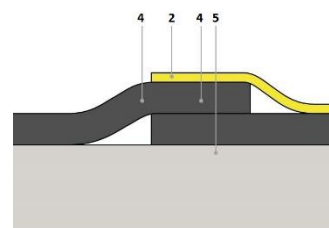
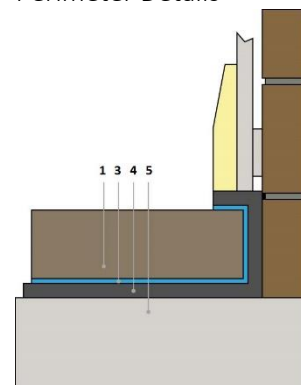
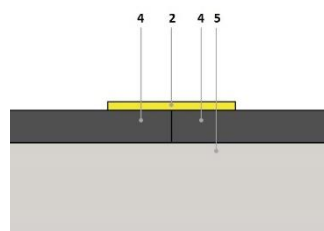
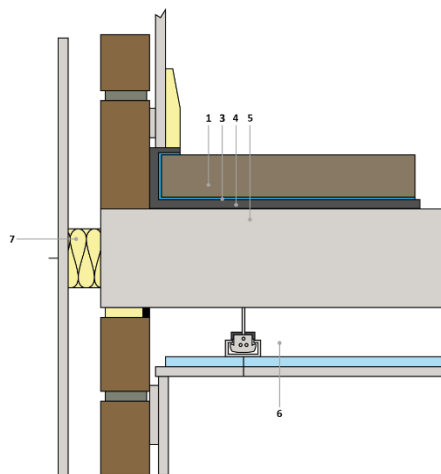
Free flowing screed



Construction Detail

Joint Details

Perimeter Details

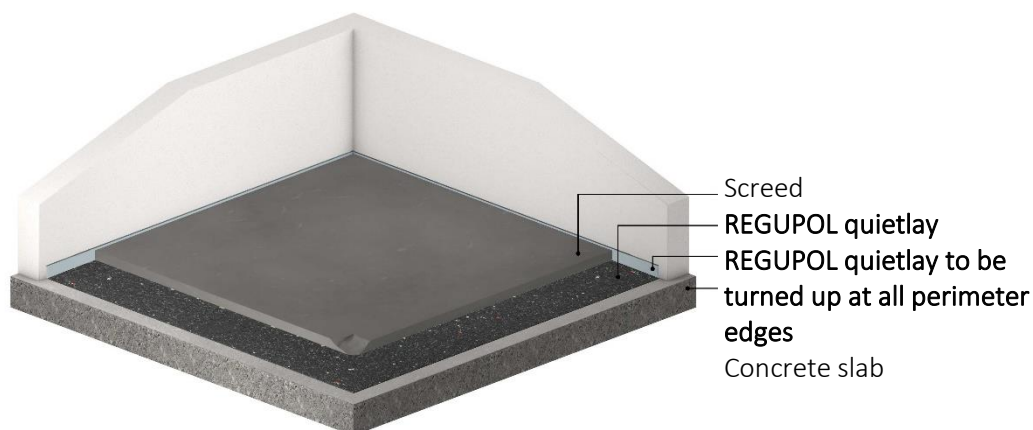


- 1 Screed
- 2 Hi-Tack tape
- 3 Polythene sheeting
- 4 REGUPOL quietlay

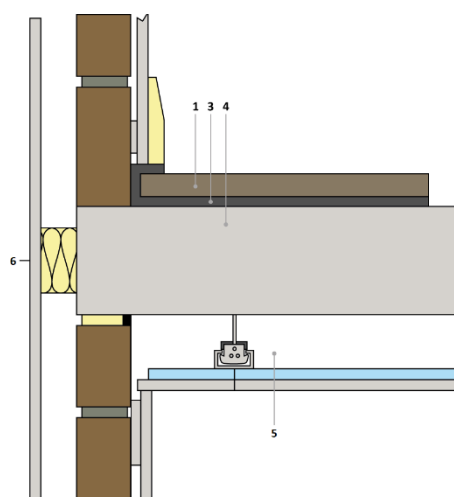
- 5 Concrete slab
- 6 Suspended ceiling system
- 7 Acoustic cavity closer

## Floor assembly example

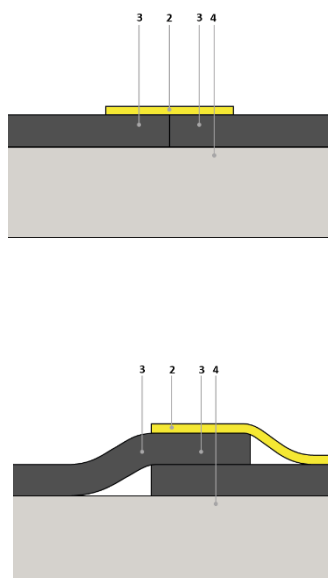
Cement screed



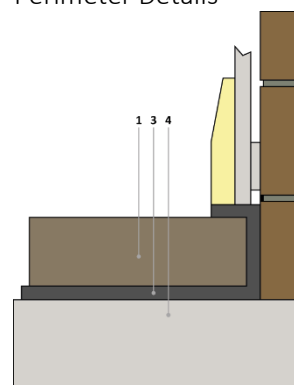
Construction Detail



Joint Details



Perimeter Details



- 1 Screed
- 2 Hi-Tack tape
- 3 REGUPOL quietlay

- 4 Concrete slab
- 5 Suspended ceiling system
- 6 Acoustic cavity closer

**IMPORTANT:** The information provided within this document is believed correct and to the best of our available knowledge at its revision date and is provided as suggestion for safe handling, storage, transportation, use and disposal. The information should not be considered obligation in respect of warranty of (technical) performance, quality (specification) or suitability for any application or design. The customer must satisfy themselves the product (or draft specification) are relevant and suitable for their need and design intent. Prospective users should test a sample of product under their own conditions to satisfy themselves of its suitability for intended purpose and that expert advice be sought where different applications are contemplated. Due to our policy of continuous improvement we reserve the right to alter or amend published specification or design without prior notice. Reproduction of any part of this publication in any manner is not permitted without our prior written consent.