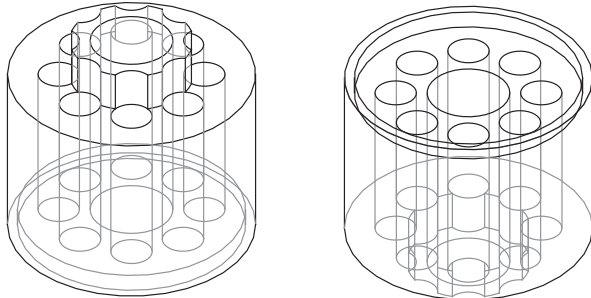


Kinetics IsoGrid

Quick connect ceiling hanger

Technical Data Sheet



Dual Deflection Neoprene Isolator

The IsoGrid Quick Connect Ceiling Hanger utilizes a specially designed Dual Deflection neoprene isolator with internal bulge areas. These internal bulge areas allow the Dual Deflection neoprene element to achieve greater deflections than similarly sized elements while maintaining lateral stability. Greater deflection translates to greater performance for your noise control ceilings.

FEATURES and BENEFITS

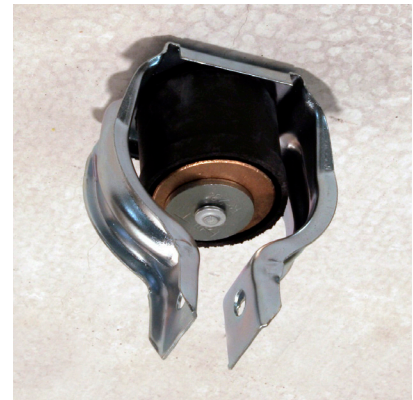
- Dramatic labour savings over conventional ceiling hangers
- Meet STC and IIC requirements while maximizing ceiling height
- Various attachment methods allow for installation on a variety of ceiling structures
- Quick and easy installation
- Known deflection rates ensure performance under design loads
- Bronze core prevents poor acoustic performance due to over compression or accidental short circuiting of the transmission pathway

APPLICATION

Secured to concrete, metal deck, or structural framing, IsoGrid Quick Connect Ceiling Hanger incorporates a neoprene element to resiliently support one or more layers of gypsum board. Attachment can be made directly into concrete by powder-actuated fastener through the hanger (where loads and regulations permit). Wire is then tied to the bottom of the hanger bracket through the built-in mounting holes. Gypsum board is installed using either drywall ceiling grid or cold rolled and hat channel.

SPECIFICATIONS:

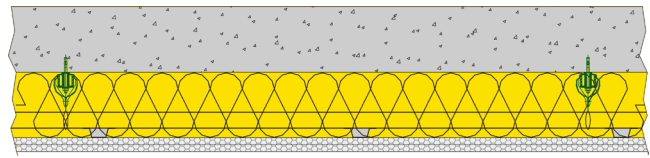
- Hanger brackets are bright zinc plated
- Isolation hangers have a typical overload of 50%
- Hanger brackets will carry (5) times overload without failure



STC/IIC SOUND TEST DATA

6" Concrete Slab
 KINETICSTM IsoGrid Ceiling Hanger
 6" Airspace Filled with Fiberglass Insulation
 Cold Rolled Channel (CRC)
 Drywall Furring Channel
 2 Layers 5/8" Gypsum Board

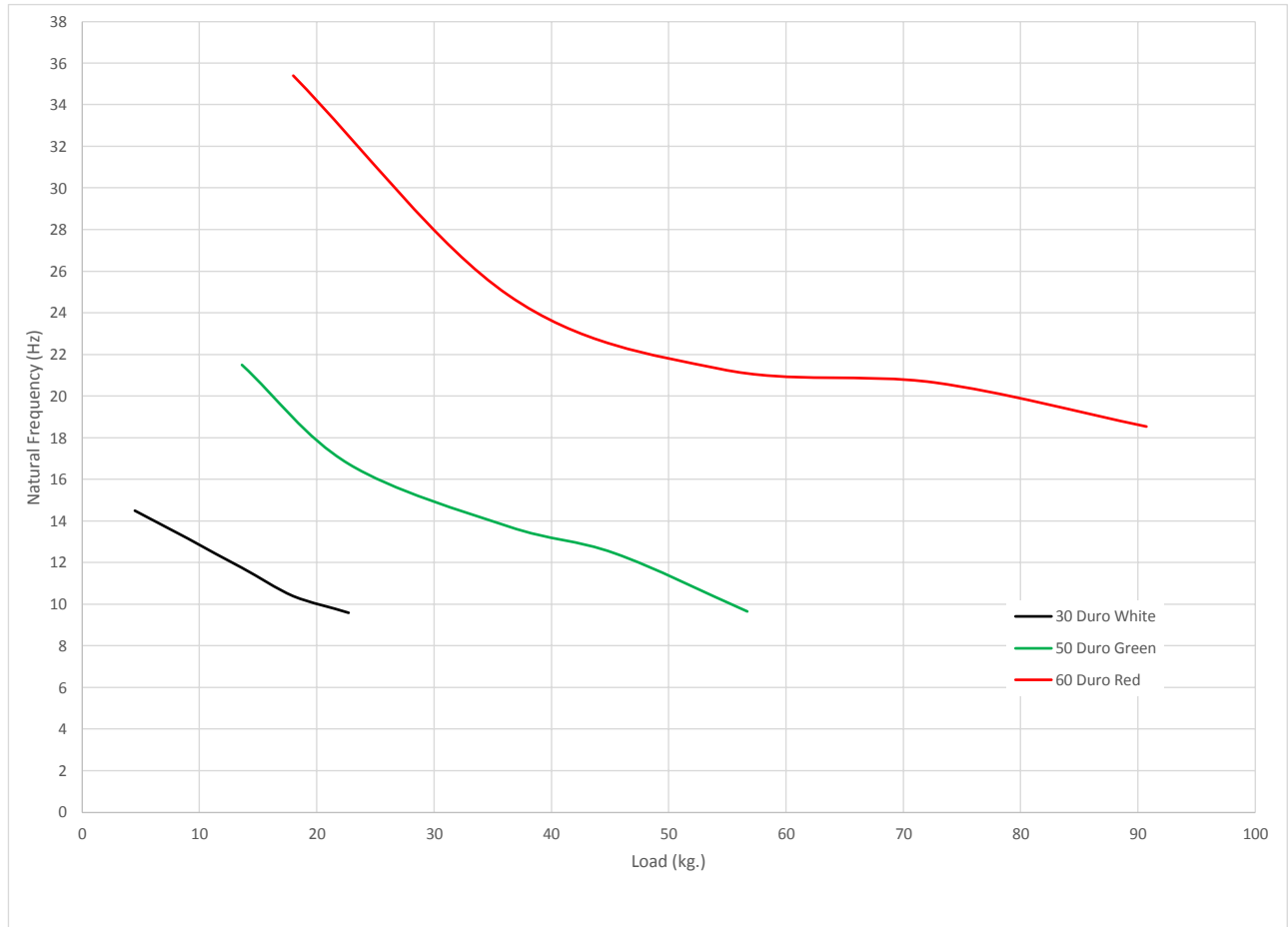
STC 63
 IIC 50



KINETICS Test #AT001084

Visit www.kineticsnoise.com/arch/tests/isogrid.html for complete IsoGrid STC/IIC Sound test data.

Natural Frequency vs. Load

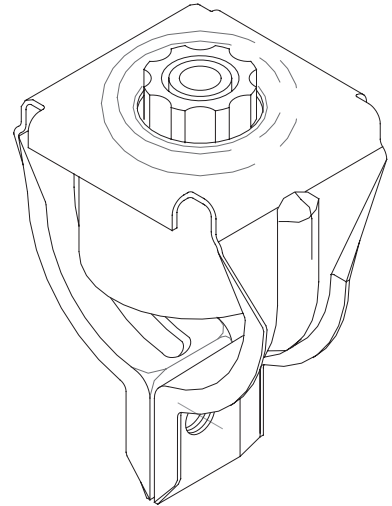
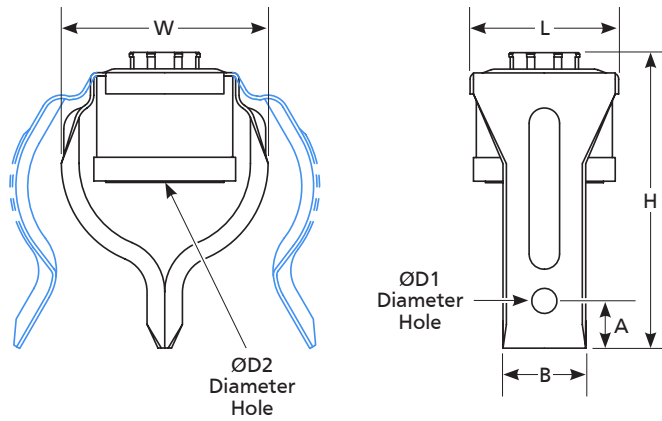


SELECTION GUIDE

Model	Maximum Capacity (Kg)	Maximum Deflection (Mm)	Layers Of Drywall*	Dot Color
40	19	5	1	White
105	48	5	2	Green
160	72	5	3	Red

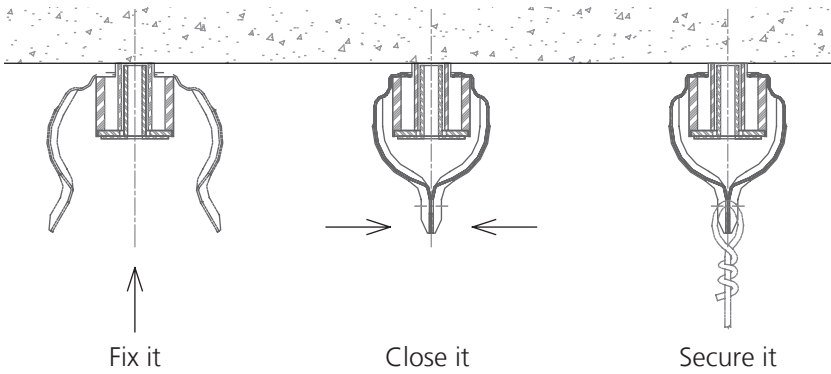
*Based on IsoGrid 1.2m x 1.2m on center spacing carrying 1.44 m² of ceiling

SPECIFICATION



Type	A	B	D1	D2	H	L	W
IsoGrid 40/160	13mm	22mm	7mm	8mm	79mm	40mm	56mm

3 STEP QUICK-CONNECT INSTALLATION



Three main installation connection methods can be used with the IsoGrid hanger:

- Suspension Tie Wire
- Suspension Angle
- Suspension Strap



Assembled and supplied by:
 CMS Danskin Acoustics
 Unit 2, Lyncastle Rd, Appleton, Warrington, WA4 4SN