

TECHNICAL DATA

REGUPOL BLOCKWORK ISOLATION STRIP

formerly REGUPOL 6010XHT ISOLATING STRIP

Product

REGUPOL blockwork isolation strips are designed to sit below and above blockwork walls. They are a very simple and effective way to reduce structure borne noise. Being a rubber crumb product benefits from longevity and minimal creep.



Features and Benefits

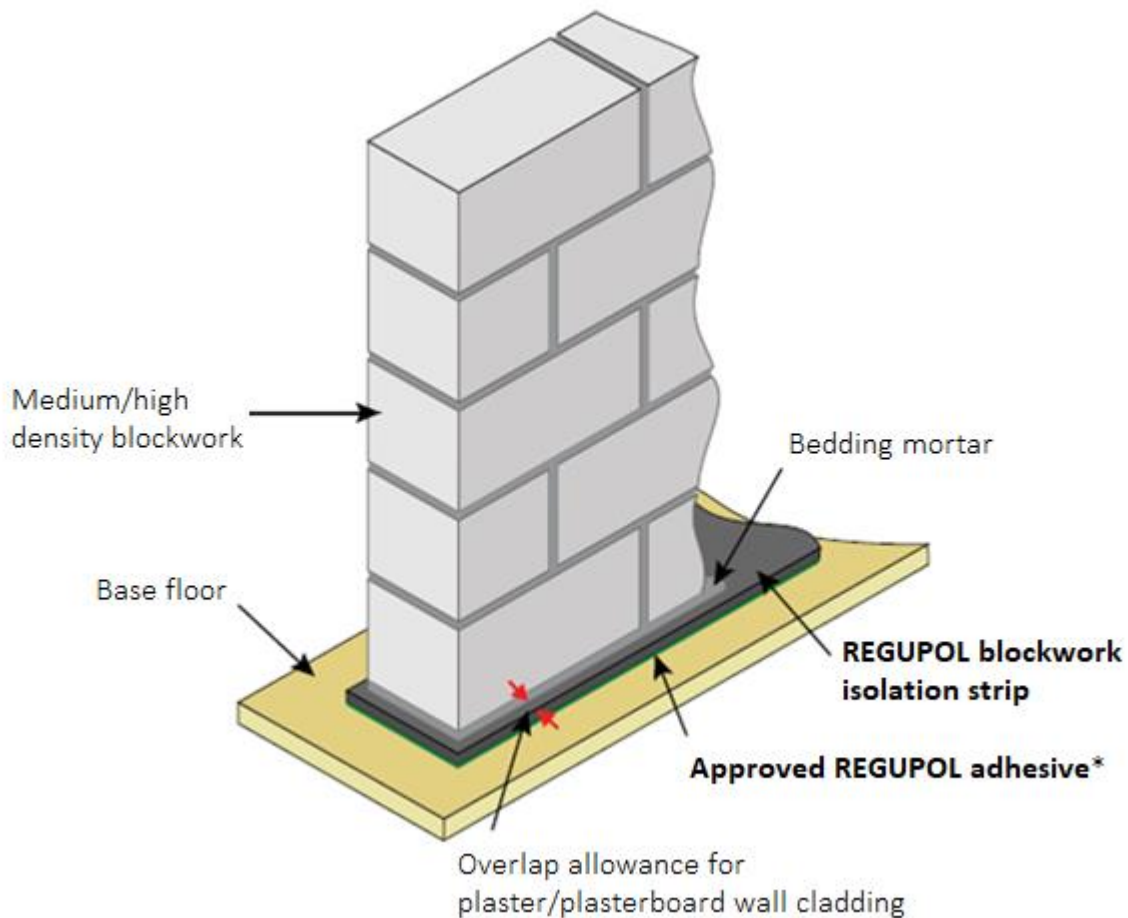
- Offers long term performance without collapse or “bottoming” out under high point loads
- Capable of withstanding loads up to and including 0.8N/mm², with low frequency performance achieved.
- Resistant to ageing and deformation
- Quick and easy to install - simply bond to the subfloor beneath the partition
- Minimises construction heights
- High quality and exact material thickness guaranteed
- Product manufactured using recycled materials and 100% Recyclable

Physical information

Roll width	Please contact CMS Danskin Acoustics
Roll length	1.25m
Material thickness	6mm*
Weight per m ²	4.5kg/m ²
Material composition	Recycled rubber

* Other thicknesses available upon request. Please contact CMS Danskin Acoustics.

Typical installation



* please contact CMS Danskin Acoustics for advice.

1. Prepare the Base Floor. It is important that the base floor is Dry, Clean (free of dirt and concrete dust) and Flat.
2. The **REGUPOL blockwork isolation strip** can either be bonded to the base floor or loose laid. Bonding should be carried out in accordance with the adhesive manufacturer's instructions. Ensure that a sufficient width of **REGUPOL blockwork isolation strip** is used for the partition and cladding. Any surplus material should be trimmed with a builder's knife.
3. The measured RH of the concrete floor should be less than 75% prior to bonding the acoustic layer. If over 75% RH, use **REGUPOL barrier 99-201**. To determine RH, please use a Hygrometer.
4. When bonding to a bare concrete slab the surface should be sealed before applying the adhesive.

NB

REGUPOL blockwork isolation strip has a maximum load bearing capacity of 0.8N/mm^2 , therefore this must be taken into consideration when calculating the linear loads.

IMPORTANT: The information provided within this document is believed correct and to the best of our available knowledge at its revision date and is provided as suggestion for safe handling, storage, transportation, use and disposal. The information should not be considered obligation in respect of warranty of (technical) performance, quality (specification) or suitability for any application or design. The customer must satisfy themselves the product (or draft specification) are relevant and suitable for their need and design intent. Prospective users should test a sample of product under their own conditions to satisfy themselves of its suitability for intended purpose and that expert advice be sought where different applications are contemplated. Due to our policy of continuous improvement we reserve the right to alter or amend published specification or design without prior notice. Reproduction of any part of this publication in any manner is not permitted without our prior written consent.