

TECHNICAL DATA

REGUPOL 3D ISOLATION WASHER

Product

REGUPOL 3D Isolation Washers are designed to reduce flanking noise transmitted by mechanical fasteners. The top-hat design effectively eliminates the transfer of vibration via decoupling.

The bottom shank guides the fastener through the footing. This prevents the fastener from making contact and short-circuiting the isolation system.



Features and Benefits

- Virtually eliminates the transfer of vibration
- Quick and simple to install
- Available in multiple sizes
- Works with both metal and wood studs

Applications

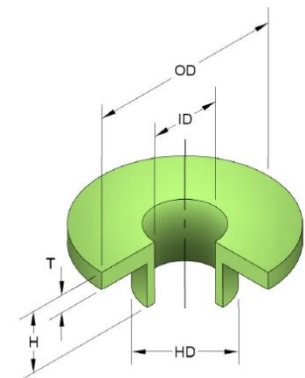
- Mechanical fixings
- Structural fixings
- Machinery mounting
- Timber and metal partitions

Torque values

Bolt Diameter	Torque value
M6	32Nm
M8	47Nm
M10	54Nm
M12	65Nm
M16	95Nm
M24	129Nm

Dimensions

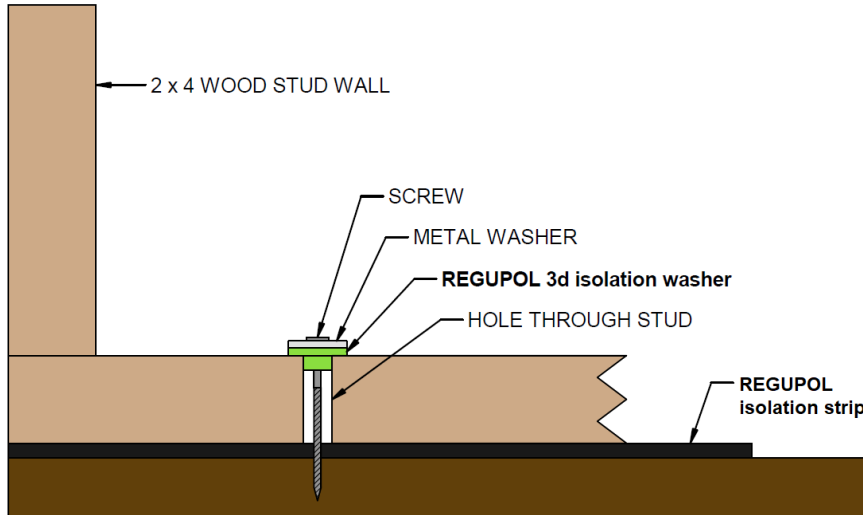
Bolt Diameter	Shore Hardness	ID	HD	OD	T	H	Δ
M6	50	7mm	13mm	25mm	3mm	10mm	1mm
M8	60	9mm	14mm	35mm	3mm	13mm	2mm
M10	60	12mm	17mm	38mm	3mm	13mm	2mm
M12	60	14mm	19mm	41mm	3mm	13mm	2mm
M16	60	18mm	23mm	51mm	3mm	16mm	2mm
M24	60	27mm	32mm	70mm	6mm	22mm	2mm



Note: Height H is a combination of shank height and thickness T. The shank height is the difference between height H and thickness T. All measurements are subject to production tolerances. Maximum allowable static deflection Δ is the distance each washer can be compressed.

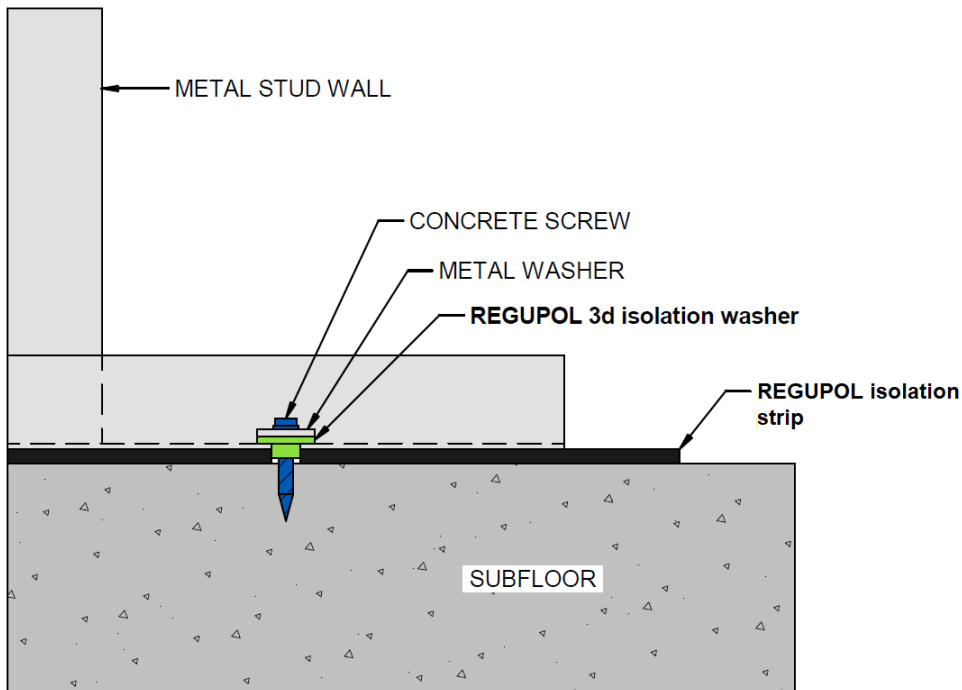
Assembly example

Wood stud interior wall



Assembly example

Metal stud interior wall



IMPORTANT: The information provided within this document is believed correct and to the best of our available knowledge at its revision date and is provided as suggestion for safe handling, storage, transportation, use and disposal. The information should not be considered obligation in respect of warranty of (technical) performance, quality (specification) or suitability for any application or design. The customer must satisfy themselves the product (or draft specification) are relevant and suitable for their need and design intent. Prospective users should test a sample of product under their own conditions to satisfy themselves of its suitability for intended purpose and that expert advice be sought where different applications are contemplated. Due to our policy of continuous improvement we reserve the right to alter or amend published specification or design without prior notice. Reproduction of any part of this publication in any manner is not permitted without our prior written consent.