

## TECHNICAL DATA

### REGUPOL SONUS CURVE 17

formerly REGUPOL 6010 BA

#### Product

High load bearing screed isolation solution, manufactured from recycled crumb, delivering effective isolation and impact sound insulation, even under heavy loads.

**REGUPOL sonus curve 17** is often the preferred choice for premium developments and those where superior acoustic performance is critical.

**REGUPOL sonus curve 17** meets the requirements of Approved Document E (England & Wales), Technical Booklet G (Northern Ireland) and Section 5 of the Building Regulations (Scotland).

#### Material

- PUR-bonded recycled rubber fibres
- Dimpled profile on the underside

#### Features and Benefits

- Excellent impact and airborne performance
- Minimal creep, even under high loads
- Resistant to ageing and deformation
- Quick and easy to install
- Mildew and moisture proof
- Product manufactured using recycled materials and 100% recyclable
- Manufacturing facility certified to ISO 9001, ISO 45001, ISO 14001, ISO 50001

#### Applications

**REGUPOL sonus curve 17** delivers a high end isolation solution for prestigious developments and areas where heavy loads are apparent. These include:

- Luxury apartments and Penthouses
- Hotels
- Cinemas/Theatres
- Schools and Libraries
- Hospitals
- Retail
- Gymnasiums

#### Physical information

Roll width	1250mm	
Roll length	10m	
Material thickness	17mm	
Weight per roll / per m <sup>2</sup>	95kg	6.9kg/m <sup>2</sup>
Material composition	Recycled Rubber	



<sup>1</sup> Tested as per French VOC regulation décret n° 2011-321

Acoustical Performance*	Standard	Result	Comment
<b>REGUPOL sonus curve 17,</b> Heavyweight Standard Floor	BS EN ISO 140-7:1998	$L'_{nT,w}$ 40 dB $D_{nT,w}$ 62 dB	Post completion testing**
Under screed:			
45 mm anhydrite screed, <b>REGUPOL sonus curve 17,</b> 140 mm concrete slab	DIN EN ISO 10140-3 DIN EN ISO 717-2	$\Delta L_w \geq 28$ dB $L_{n,w}$ 45 dB	Test reports 024-H163-42591
	DIN EN ISO 10140-1 DIN EN ISO 717-1	$R_w$ 63 dB	024-H162-42591
Under T&G timber:			
18mm T&G chipboard <b>REGUPOL sonus curve 17,</b> Heavyweight Standard Floor	BS EN ISO 140-8:1998	$\Delta L_w \geq 22$ dB	Test report 3853

\*Assembly from top to bottom

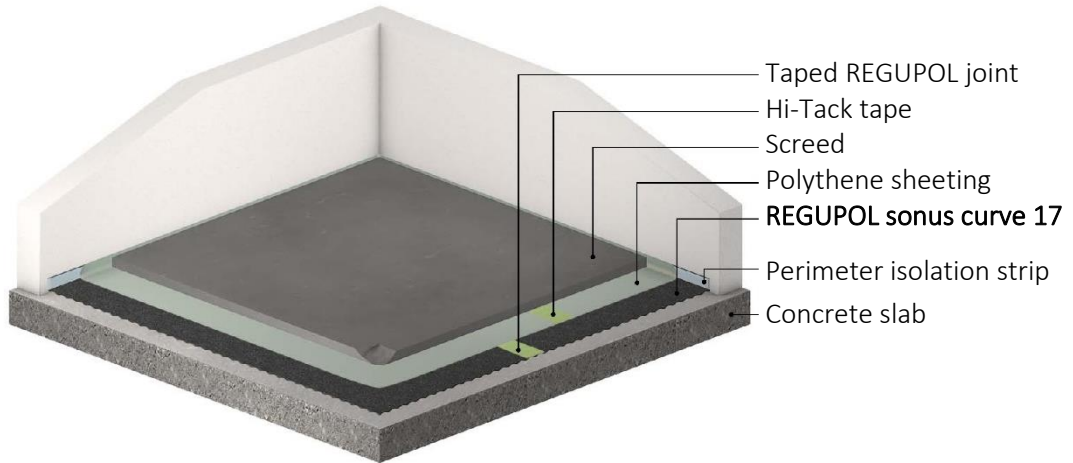
\*\* Independent test reports available upon request.

Material properties	Standard	Result
Density		approx. 575 kg/m <sup>3</sup>
Maximum surface load		50 kN/m <sup>2</sup>
Mean dynamic stiffness value	DIN EN 29052-1	$s'_t \leq 15$ MN/m <sup>3</sup>
Compressibility	DIN EN 12431	$c \leq 2$ mm

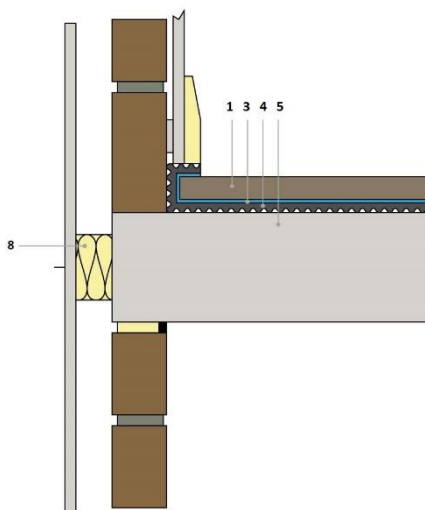
Thermal behaviour	Standard	Result
Thermal conductivity	DIN EN 12667	$\lambda = 0.075$ W/(mK)
Thermal resistance	DIN EN 12667	$R = 0.167$ (m <sup>2</sup> K)/W
Temperature resistance		-20 to +60° C

Health protection	Standard	Result
VOC	DIN EN 16516	compliant with EU-LCI list and German AgBB scheme; "A+" as per décret n°2011-321

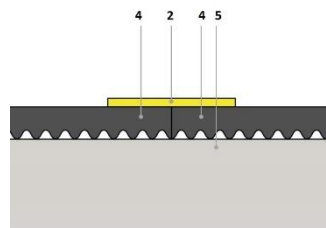
**Floor assembly example**  
Cement screed



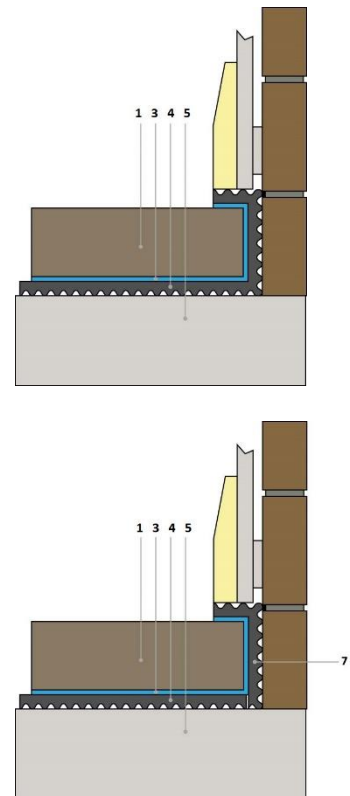
Construction Detail



Joint Details



Perimeter Details



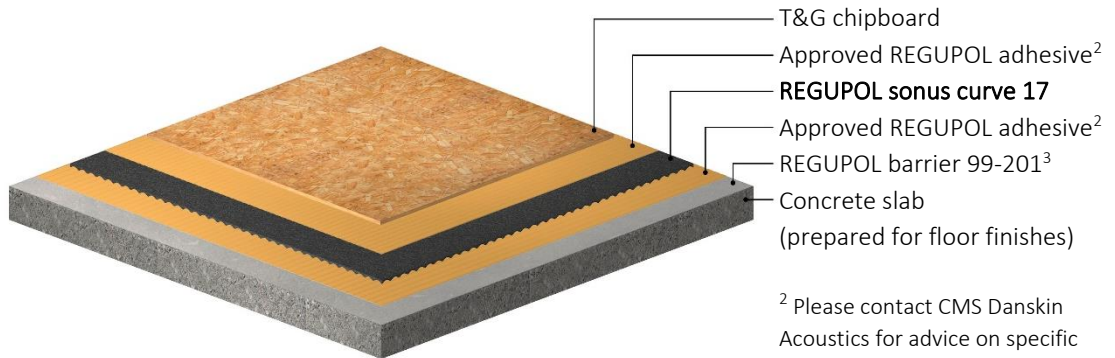
- 1 Screed
- 2 Hi-Tack tape
- 3 Polythene sheeting
- 4 REGUPOL sonus curve

- 5 Concrete slab
- 6 Suspended ceiling system
- 7 Perimeter isolation strip
- 8 Acoustic cavity closer

## Floor assembly

T&G boards

---



<sup>2</sup> Please contact CMS Danskin Acoustics for advice on specific adhesive type.

<sup>3</sup> If moisture exceeds required levels

## Installation

Full installation guidelines are available upon request.

## Storage

**REGUPOL sonus curve** should be protected from moisture during storage, transport and installation.

**IMPORTANT:** The information provided within this document is believed correct and to the best of our available knowledge at its revision date and is provided as suggestion for safe handling, storage, transportation, use and disposal. The information should not be considered obligation in respect of warranty of (technical) performance, quality (specification) or suitability for any application or design. The customer must satisfy themselves the product (or draft specification) are relevant and suitable for their need and design intent. Prospective users should test a sample of product under their own conditions to satisfy themselves of its suitability for intended purpose and that expert advice be sought where different applications are contemplated. Due to our policy of continuous improvement we reserve the right to alter or amend published specification or design without prior notice. Reproduction of any part of this publication in any manner is not permitted without our prior written consent.