

# REGUPOL 7210C

for screed isolation and resilient overlayment applications

## Technical Data Sheet

### PRODUCT DESCRIPTION

REGUPOL 7210C is a cost-effective rubber bound underscreed material specifically introduced for the PCT (Pre-Completion Test) market for the isolation of all screed types for compliance with Approved Document E Building Regulations (England & Wales) and Section H of the Scottish Building Regulations. It is a versatile resilient material that also has applications as a resilient underlayment.

### APPLICATION

REGUPOL 7210C is used under all types of floor screeds including:

- New build apartments
- Hotels
- Schools
- Care homes
- Commercial facilities

Recommended for all PCT (Pre-Completion Testing) sites.

REGUPOL 7210C can also be utilised as a resilient underlayment for use under final floor finishes such as:

- Engineered timber
- Parquet Flooring
- Laminate flooring
- Carpets
- Certain tiles and stone applications

Note: use a perimeter strip when using as an underlayment with Engineered Timber, Parquet Flooring, Tiles and Stone or leave a small gap which must be filled with a flexible sealant.

### FEATURES and BENEFITS

- Has been independently tested on-site to show compliance in accordance with Approved Document E and section H of the Building Regulations
- Excellent impact and airborne performance
- Offers long term performance without collapse or "bottoming" out under high point loads



- Minimal creep, even under high loads
- Resistant to ageing and deformation
- Quick and easy to install
- Minimises construction heights
- High quality and exact material thickness guaranteed
- Suitable for use with underfloor heating
- Protects expansion joints
- Zero ozone depletion potential (ODP), zero global warming potential (GWP)
- Mildew and moisture resistant
- When used with a sand/cement screed; there is no requirement to use a dpm (please see diagrams)
- Product manufactured using Recycled Materials and 100% recyclable

### PHYSICAL INFORMATION

Sheet length	2.25m
Sheet width	1.15m
Roll length	10m
Roll width	1.15m
Material thickness	5mm standard, 3mm available upon request

### TECHNICAL INFORMATION

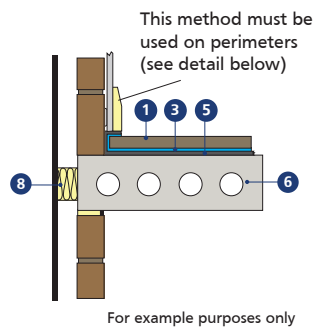
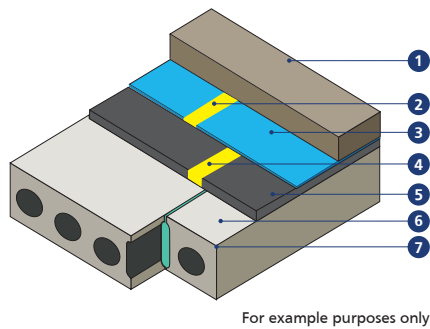
Density	720kg/m <sup>3</sup>	
Tensile strength (DIN 53571)	0.5N/mm <sup>2</sup>	
Thermal conductivity	approx 0.14W/mK	
Elongation at break	approx 75%	
Temperature resistance	-40°C to +110°C	
Airborne sound insulation (DnT,w + Ctr)	49dB (mean average)*	
Impact sound insulation (L'nT,w (Ci))	3mm	50dB***
	5mm	46dB (mean average)**
Impact performance ΔLW	3mm	18dB
	5mm	20dB

- \* Building Regulations Approved Document E requirements 45dB or greater (performance figures obtained from independent testing)
- \*\* Building Regulations Approved Document E requirements 62dB or less
- \*\*\* Site Test 250mm slab, 3mm REGUPOL 7210C, 33mm screed, 20mm Marble NO Ceiling (performance figures obtained from independent testing)

## TYPICAL INSTALLATION

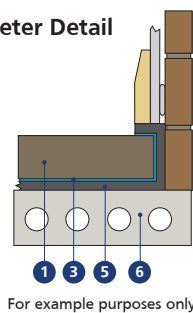
### REGUPOL 7210C with DPM

(only applicable where proprietary free flowing screeds are used)

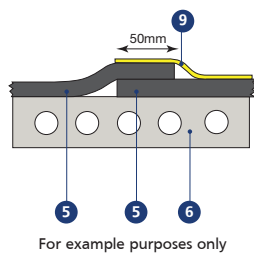


- 1 Min. 40mm proprietary screed nominal 80kg/m<sup>2</sup>
  - 2 Taped joint\*
  - 3 Min. 500 gauge polythene sheeting
  - 4 Joint detail
  - 5 REGUPOL 7210C 3/5mm layer
  - 6 Pre-cast hollow core
  - 7 Perimeter detail
  - 8 Acoustic cavity closer
  - 9 Hi-tack tape
- \*DPM overlap to be minimum 100mm

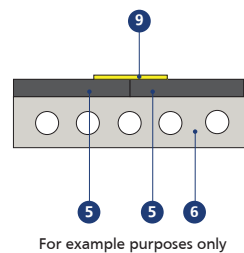
#### 7 Perimeter Detail



#### 4 Joint Detail (overlapped)

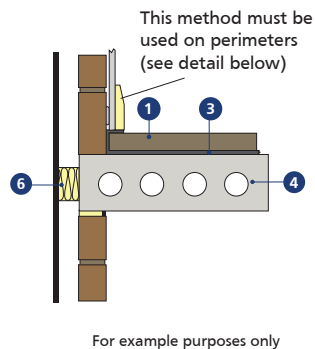
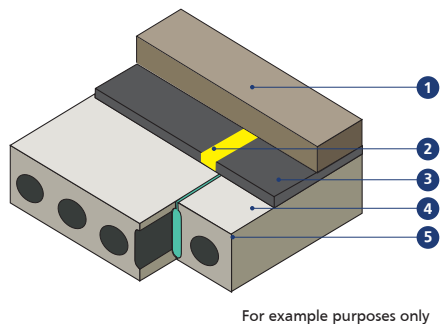


#### 4 Joint Detail (buted)



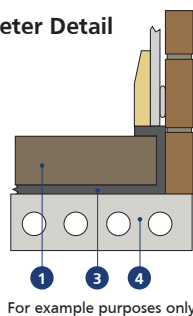
### REGUPOL 7210C without DPM

(for use with Sand/Cement Screeds only)

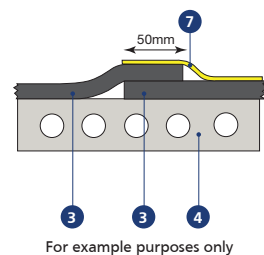


- 1 Min. 65mm sand cement screed
- 2 Joint detail
- 3 REGUPOL 7210C 3/5mm layer
- 4 Pre-cast hollow core
- 5 Perimeter detail
- 6 Acoustic cavity closer
- 7 Hi-tack tape

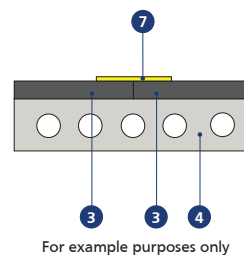
#### 5 Perimeter Detail

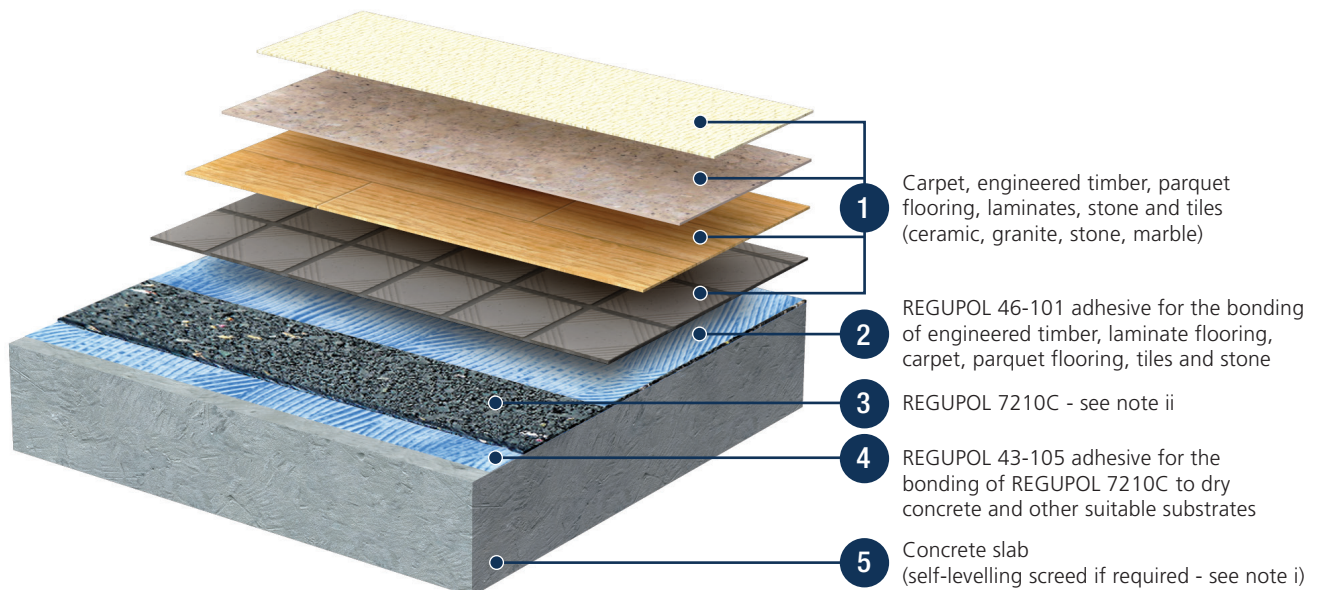


#### 2 Joint Detail (overlapped)



#### 2 Joint Detail (buted)





**Consult CMS Danskin Acoustics for recommended adhesives**

Installation key points:

- Area of installation must be dry, dirt and dust free and weather tight. If over 75% RH seal with suitable primer. To determine RH please use a Hygrometer.
- REGUPOL 7210C should be unwound and left for a minimum 8 hours or ideally overnight at the place where it is to be installed, to allow for any potential shrinkage.
- The subfloor must be sound, smooth and dry. A self-levelling compound may be required to achieve the desired 'SR' value - see note iii.
- When bonding to bare concrete a suitable concrete sealer is recommended to ensure maximum adhesive coverage and bond strength.
- When installing timber flooring over REGUPOL 7210C always use a flanking band around the perimeter to reduce impact transmissions into walls.
- When installing ceramic tiles, stone and parquet flooring leave at least a 3mm gap around the perimeter which should be filled with a flexible sealant.

Notes:

- CoF (Coefficient of Restitution) for Light Duty Floors (0.55) to comply with the requirements of TTA document entitled 'Ceramic and Natural Stone Flooring to Acoustic Systems to meet the requirements of the Building Regulations Approved Document E Resistance to the passage of sound'.
- Product thickness selected is based on acoustic performance required.
- Impact performance (Delta Lw) was tested under a wood layer on a Heavyweight Standard Floor.
- When using furnishings with high point loads we recommend the use of load spreading furniture cups.

 **REGUPOL**