

# Regupol® E48 (E-FC-6)

## High Performance Screed Isolation for Beam & Block Floors

### Technical Data Sheet

#### PRODUCT DESCRIPTION

Regupol® E48 is a recycled tyre crumb product designed to isolate screeds from the main structure of the building, reducing impact energy generated by general footfall.

Regupol® E48 offers enhanced acoustic performance at loads up to and including 30kN/m and having a dimpled surface on one side increases air movement, further aiding overall performance.



#### APPLICATION

Regupol® E48 has been developed to offer enhanced isolation and impact sound performance in:

- Apartments
- Hotels
- Schools
- Hospitals
- Retail

#### FEATURES and BENEFITS

- Robust Detail approval for beam & block floor E-FC-6
- Excellent impact and airborne performance
- Offers long term performance without collapse or “bottoming” out under high point loads
- Resistant to ageing and deformation
- Quick and easy to install with no need for separate perimeter strips
- Minimises construction heights
- Mildew and moisture proof
- Zero global warming potential (GWP) and zero ozone depletion potential (ODP)
- Product manufactured using Recycled Materials and 100% recyclable

#### PHYSICAL INFORMATION

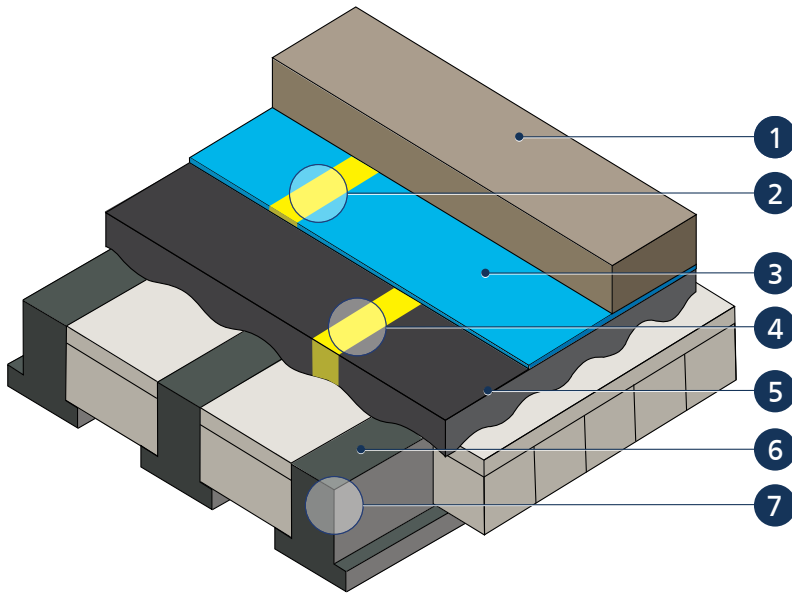
|                    |                                |
|--------------------|--------------------------------|
| Sheet length       | 13m                            |
| Sheet width        | 1.15m                          |
| Material thickness | 8mm nominal (dimpled one side) |

#### TECHNICAL INFORMATION

|   |  |
|---|--|
| Density                                 | approx 600kg/m <sup>3</sup>                  |
| Tensile strength (DIN 53571)            | approx 0.5N/mm <sup>2</sup>                  |
| Thermal conductivity                    | approx 0.14W/mK                              |
| Elongation at break                     | approx 47%                                   |
| Mean Value of Dynamic Stiffness         | 47MN/m <sup>3</sup>                          |
| Maximum load bearing capacity           | 3000kg/m <sup>2</sup> (30kN/m <sup>2</sup> ) |
| Temperature resistance                  | -40 °C to +110 °C                            |
| Airborne sound insulation (DnT,w + Ctr) | 49dB (mean average)                          |
| Impact sound insulation (L'nT,w (Ci))   | *47dB (mean average)                         |
| Impact Improvement (ΔLw (Cld))          | 31dB   |

\* Based upon site testing for Robust Detail compliance in beam and block applications

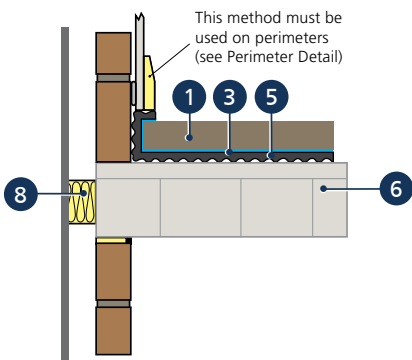
# TYPICAL INSTALLATION



For example purposes only

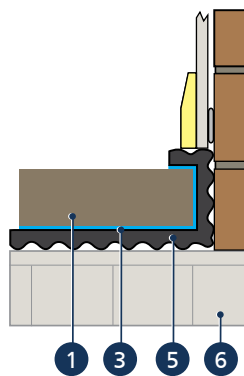
- 1 65mm sand cement screed or minimum 40mm proprietary screed
  - 2 Taped joint\*
  - 3 Minimum 500 gauge polythene sheeting
  - 4 Joint detail\*\*
  - 5 Regupol® E48 8mm layer
  - 6 Beam & Block floor, minimum 300kg/m<sup>2</sup> Blocks topped with a minimum 50mm concrete
  - 7 Perimeter detail
  - 8 Acoustic cavity closer
  - 9 Hi-tack tape
- \* DPM overlap to be minimum 100mm  
 \*\* For Proprietary Screeds

## Ceiling View



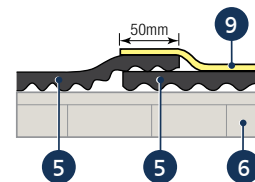
For example purposes only

## 7 Perimeter Detail



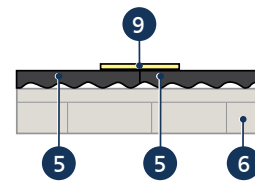
For example purposes only

## 4 Joint Detail - overlapped (Preferred method of installation)



For example purposes only

## 4 Alternative Joint Detail - butted



For example purposes only

### Important:

Regupol® E48 must be installed dimple side down.

