



Regupol®

TECHNICAL DATA SHEET

REGUPOL® 7210C

SCREED ISOLATION

PRODUCT DESCRIPTION

Regupol® 7210C is a cost-effective rubber bound underscreed material specifically introduced for the PCT (Pre-Completion Test) market for the isolation of all screed types for compliance with Approved Document E Building Regulations (England & Wales) and Section H of the Scottish Building Regulations.

APPLICATIONS

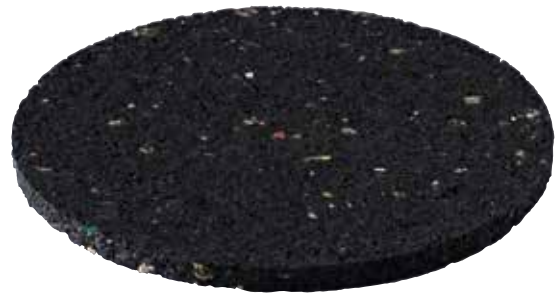
Regupol® 7210C is used under all types of floor screeds including:

- New build apartments
- Hotels
- Schools
- Care homes
- Commercial facilities

Recommended for all PCT (Pre-Completion Testing) sites.

BENEFITS

- Has been independently tested on-site to show compliance in accordance with Approved Document E and section H of the Building Regulations.
- Excellent impact and airborne performance
- Offers long term performance without collapse or “bottoming” out under high point loads
- Minimal creep, even under high loads
- Resistant to ageing and deformation
- Quick and easy to install with no need for separate perimeter strips



- Minimises construction heights
- High quality and exact material thickness guaranteed
- Suitable for use with underfloor heating
- Protects expansion joints
- Zero ozone depletion potential (ODP), zero global warming potential (GWP)
- Mildew and moisture resistant
- When used with a sand/cement screed; there is no requirement to use a dpm (please see diagrams)
- Product manufactured using Recycled Materials and 100% recyclable

WWW.CMSDANSKIN.CO.UK

CMSDANSKIN
ACOUSTICS

PHYSICAL INFORMATION

Sheet length	2.25m
Sheet width	1.15m
Roll length	10m
Roll width	1.15m
Material thickness	5mm (3mm is also available upon request)

TECHNICAL INFORMATION

Density	720kg/m ³
Tensile strength (DIN 53571)	0.5N/mm ²
Thermal conductivity	approx 0.14W/mK
Elongation at break	approx 75%
Temperature resistance	-40°C to +110°C
Airborne sound insulation (DnT,w + Ctr)	49dB (mean average)*
Impact sound insulation (L'nT,w (Ci))	46dB (mean average)**

* Building Regulations Approved Document E requirements 45dB or greater (performance figures obtained from independent testing)

** Building Regulations Approved Document E requirements 62dB or less (performance figures obtained from independent testing)

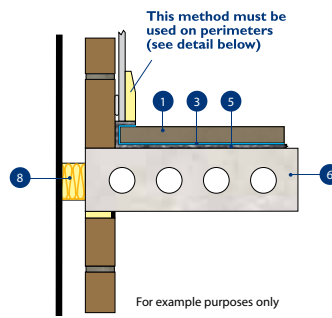
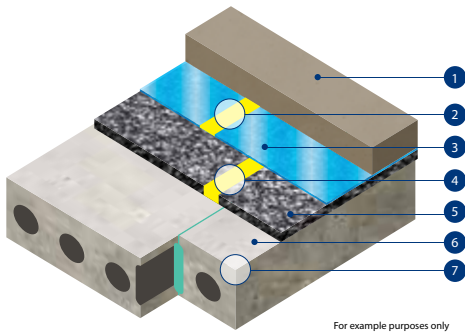
INSTALLATION SERVICE

In addition to supply of this product, CMS Danskin Acoustics offers a competitively-priced installation service anywhere in the UK. Use of our service ensures that installation is performed to the highest standards by tradesmen fully experienced in the specialist skills of fitting acoustic materials correctly.

Please contact your local CMS Danskin Acoustics for further details.

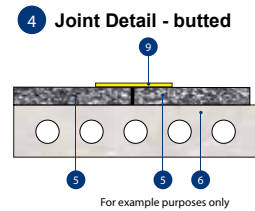
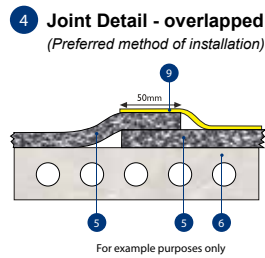
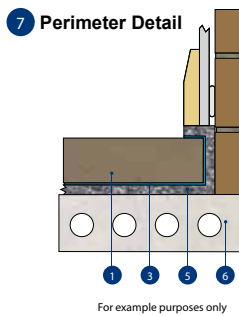
REGUPOL® 7210C WITH DPM

(only applicable where proprietary free flowing screeds are used)

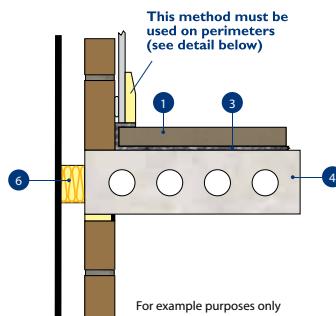
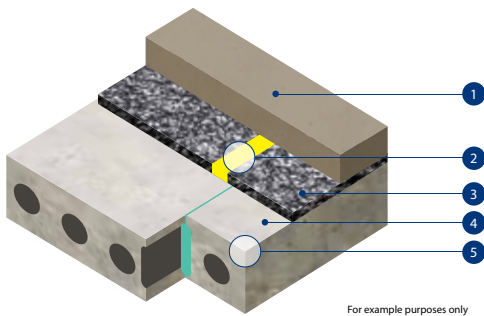


- 1 Min 40mm proprietary screed nominal 80kg/m²
- 2 Taped joint*
- 3 Min.500 gauge polythene
- 4 Joint detail
- 5 Regupol® 7210C
- 6 Pre-cast hollow core
- 7 Perimeter detail
- 8 Acoustic cavity closer
- 9 Hi-tack tape

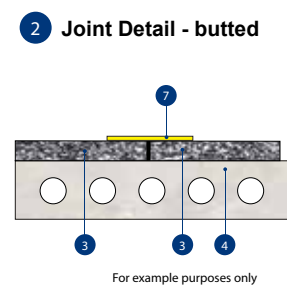
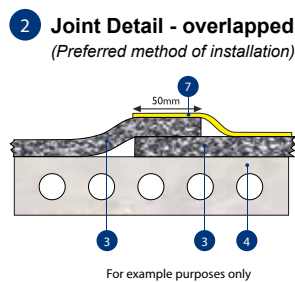
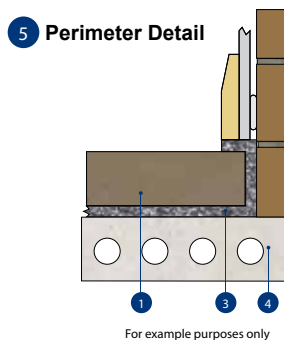
* DPM overlap to be minimum 100mm



REGUPOL® 7210C WITHOUT DPM – FOR USE WITH SAND/CEMENT SCREEDS ONLY



- 1 65mm sand cement screed
- 2 Joint detail
- 3 Regupol® 7210C
- 4 Pre-cast hollow core
- 5 Perimeter detail
- 6 Acoustic cavity closer
- 7 Hi-tack tape



CMS DANSKIN ACOUSTICS

Scotland Office: Tel: 01698 356000 Fax: 01698 372222
1 Netherton Road, Wishaw, ML2 0EQ

Central/Southern Office: Tel: 01925 577711 Fax: 01925 577733
Unit 2 Lyncastle Road, Appleton, Warrington, WA4 4SN

Email: info@cmsdanskin.co.uk Website: www.cmsdanskin.co.uk

IMPORTANT: Directions for use are given for guidance only and are not intended to form part of any contract. They should be varied or adapted to suit your particular materials or conditions of use. Goods supplied by the company are made to approved standards from the highest quality raw materials but no warranty or guarantee is given as to their suitability for any particular purpose or application, and no liability is accepted for any loss or damage arising directly or indirectly from the use of the Company's products irrespective of any information given to us as to intended use of such products. It is therefore recommended that prospective users should test a sample of this product under their own conditions to satisfy themselves that the product is suitable for the purpose intended.

CMSDANSKIN
ACOUSTICS