

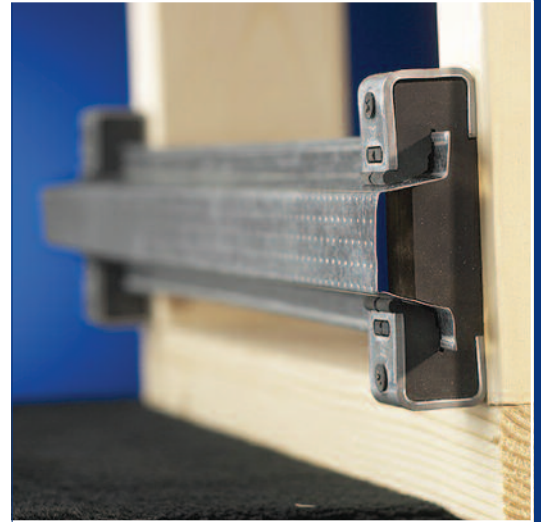
Case Study - Kinetics IsoMax Clip System



Headingley Hall

The Challenge

As part of a new build extension, Headingley Hall Care Home in Leeds aimed to exceed Part E standards while minimising the impact on living space. Faced with the task of identifying an acoustic product that would meet these stringent criteria, dry liners W.A Brownes consulted CMS Acoustics for expert guidance on product selection.



Kinetics IsoMax Clips were used to maximise sound insulation and minimise impact on living space at Headingley Hall Care Home.



The Solution

Assessing the site requirements, CMS Acoustics recommended the Kinetics IsoMax Clip System. Constructed using a special rubber isolator, its low profile design ensured maximum living space whilst the superior isolation performance helped exceed Part E requirements.

As the clips can be attached to ceiling joists, timber, metal studs or masonry, the system also significantly reduces the risk of error at the installation stage.

Installed over a total area of 1700m², the Kinetics IsoMax Clip System offered a simple construction procedure and had no requirement for specialist materials – ultimately facilitating efficient site progression.

Results

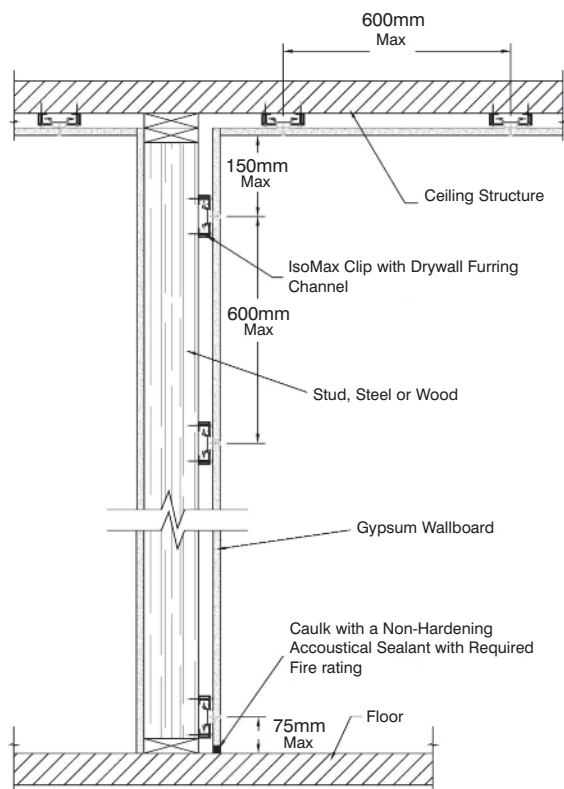
Outperforming standard resilient bar systems with additional sound insulation of up to 7dB and a load bearing capacity of 22.5kg per clip, the Kinetics IsoMax Clip System delivered the superior acoustic solution demanded by Headingley Hall Care Home.

The superior isolation performance achieved on-site also negated the need for an additional impact sound system to be used. As well as contributing to keeping construction height to a minimum, this also helped reduce the cost of build.

Sean O'Brien, site supervisor for W.A Browne, commented: "CMS Acoustics provided technical support at the start of the project, which subsequently ensured an efficient on-site installation. The clips were the obvious choice as the project objectives were to exceed Part E building regulations with minimal impact on living space."



Typical construction using the IsoMax Clip to isolate walls and ceilings



Northern Office

Unit 4 Eagle Park, Eagle Park Drive
Warrington. WA2 8JA
t: 01925 577711 f: 01925 577733

Southern Office

Unit 9, Enterprise Way
Wickford. SS1 8DH
t: 01268 568762 f: 01268 568764

info@cmsacoustics.co.uk
www.cmsacoustics.co.uk

CMS ACOUSTIC SOLUTIONS